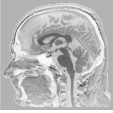
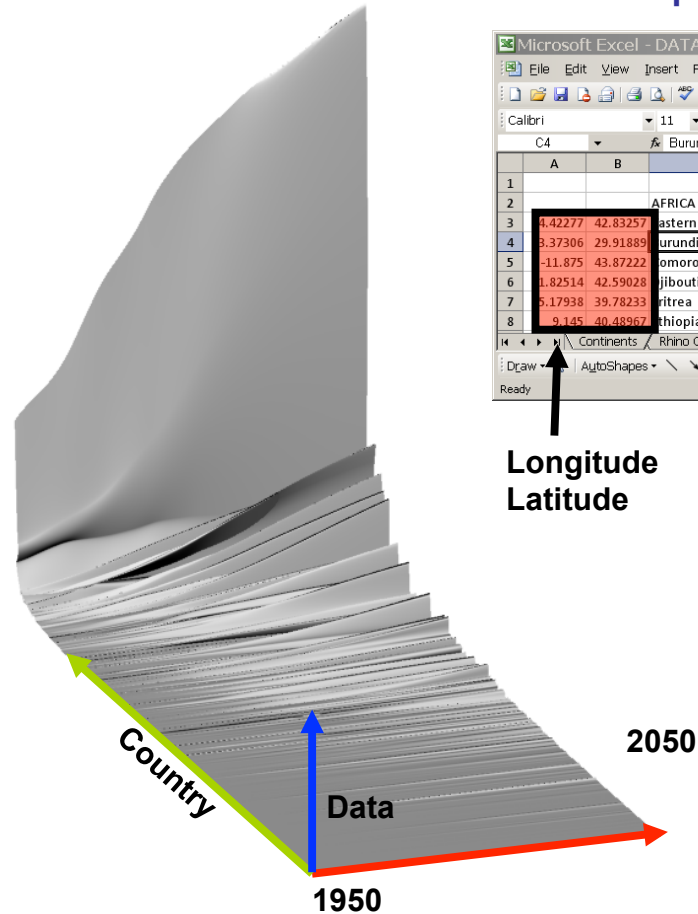


# DataMIX Case Study



2D Data of Country vs Year  
But "Country" Doesn't Have Units / Scale

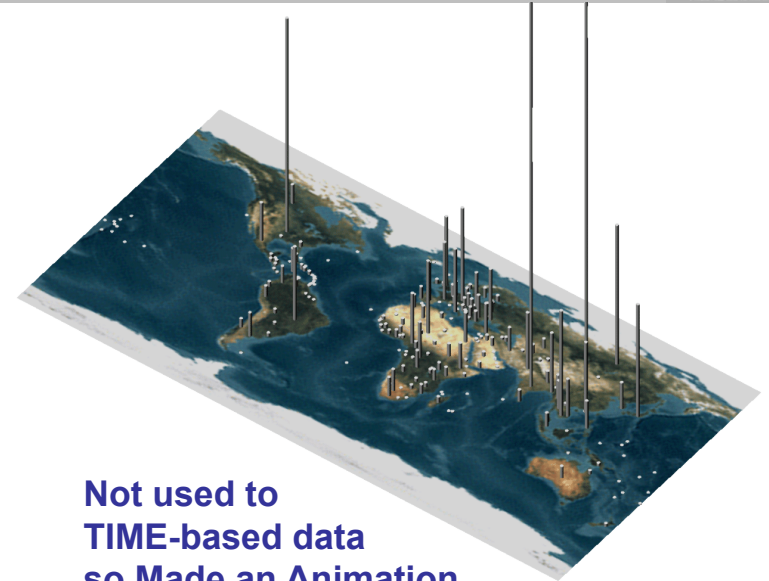
Not used to 2D data so Converted "Name" to Coordinate (Longitude & Latitude) to allow Spatial Plot



Microsoft Excel - DATAMix.xls

	A	B	C	D	E	F	G	H
1				1950	1951	1952	1953	1954
2			AFRICA	227,270	232,087	237,094	242,307	247,739
3	4.42277	42.83257	Eastern Africa	64,847	66,293	67,784	69,325	70,924
4	3.37306	29.91889	Burundi	2,456	2,505	2,551	2,595	2,640
5	-11.875	43.87222	Comoros	156	160	164	168	172
6	1.82514	42.59028	Djibouti	62	63	65	67	68
7	5.17938	39.78233	Eritrea	1,141	1,162	1,185	1,210	1,236
8	9.145	40.48967	Ethiopia	18,434	18,788	19,151	19,522	19,904

Longitude  
Latitude



Not used to TIME-based data so Made an Animation

Combined Space and Time By Extruding 3D Model Radially In Time and Scaling Size By Data

